

Technology, knowledge, and expertise for a more reliable industry

Services that maximize the performance and lifespan of your assets

[See more], [See better], [See before anyone else]



At Atten[2], we have been improving industrial reliability, efficiency, and sustainability for over two decades with advanced lubrication monitoring technology. We provide comprehensive services that optimize decision-making, reduce maintenance costs, and maximize asset performance.

We don't just design technology: we work alongside engineers and maintenance managers, integrating monitoring tools with expert knowledge to ensure your equipment performs at its best.



Custom algorithms

Diagnostics tailored to your oil for unprecedented accuracy

We develop specific algorithms that adapt to the characteristics of your lubricant and its particular application. By customizing the monitoring, we achieve greater sensitivity and precision in the data.

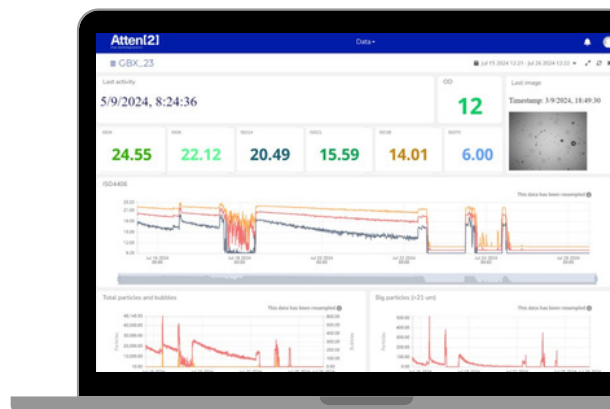
- Oil degradation: Algorithm adjusted to the actual condition of the fluid.
- Moisture contamination: Algorithm for the specific, sensitive, and reliable detection of water in the oil.

Digital platform and connectivity

Your data, accessible in real time, wherever you are

Access your sensor data at any time and from any location, ensuring control of your assets, even in remote sites.

- Cloud Platform: Remote monitoring with continuous technical support. Direct alarms sent to your email.
- Cellular Gateway: Connectivity in environments without an internal network.





**BUREAU
VERITAS**

Laboratory sample analysis – Bureau Veritas

The support of a complete diagnosis when you need it

Complement online monitoring with detailed analyses performed in an accredited laboratory for certified evaluation:

Sample Analysis: Detailed report with reliable, actionable results for precise diagnostics using key parameters.

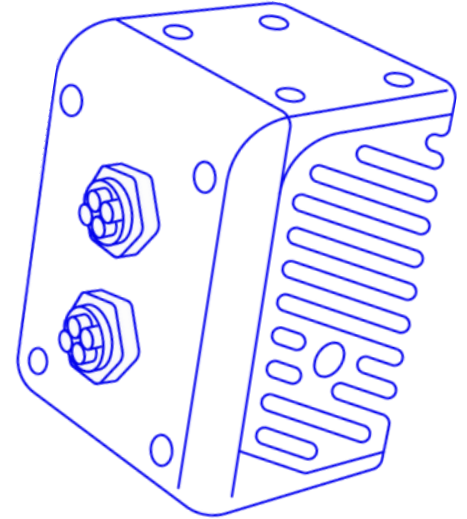
Sensor lifecycle services

Keeping your sensors like new

Ensure optimal performance and durability of your monitoring system:

- Technical inspections and firmware updates
- Recalibrations for maximum accuracy
- Replacement of mechanical parts after physical damage

Full sensor service



Technical accessories and field verification

Everything you need to guarantee data quality

- Certified fluids and cleaning kits for technical verification
- On-site verification services with inspection kits and issuance of certificates by qualified technicians

Technical support and specialized training

Expert guidance at every stage

Train your team, improve operational reliability, and solve every challenge with the support of our experts:

- Field Technical Support: Installation, supervision, and troubleshooting
- Engineering Consulting: Lubrication engineering, integration, and optimization
- Atten[2] Training: Technical and specialized courses, at our facilities or the client's site



Our services complement the technology: ensuring accuracy, expert support, and maximum performance of your assets.

Contact with us

info@atten2.com

www.atten2.com

Iñaki Goenaga 5, Eibar, Gipuzkoa, Spain

International reach

